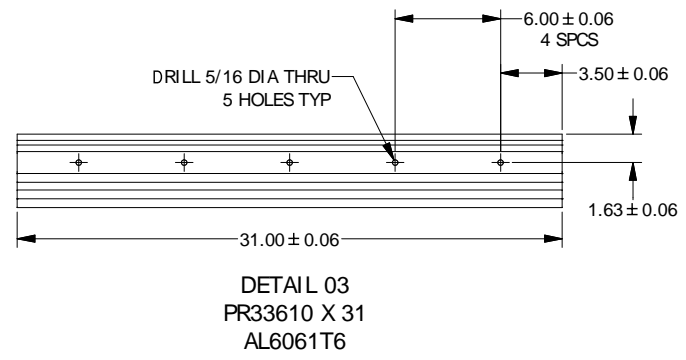
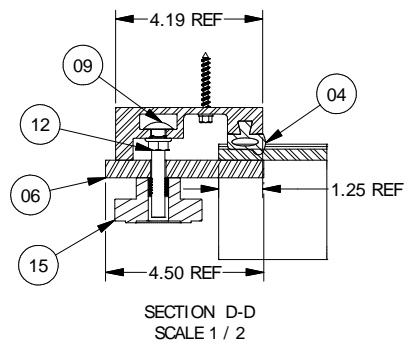
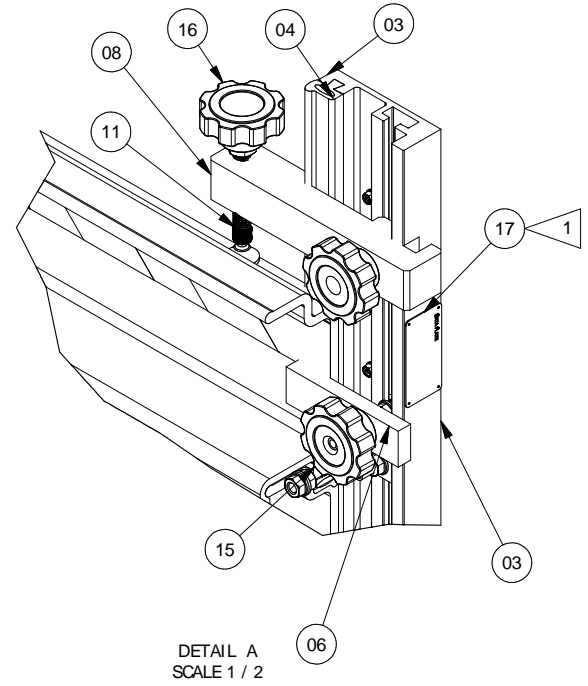


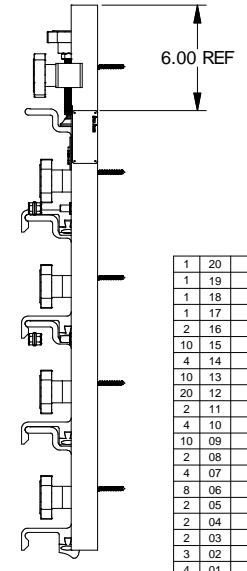
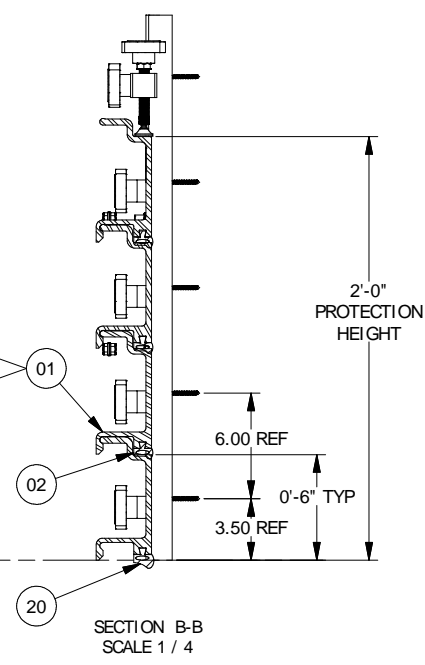
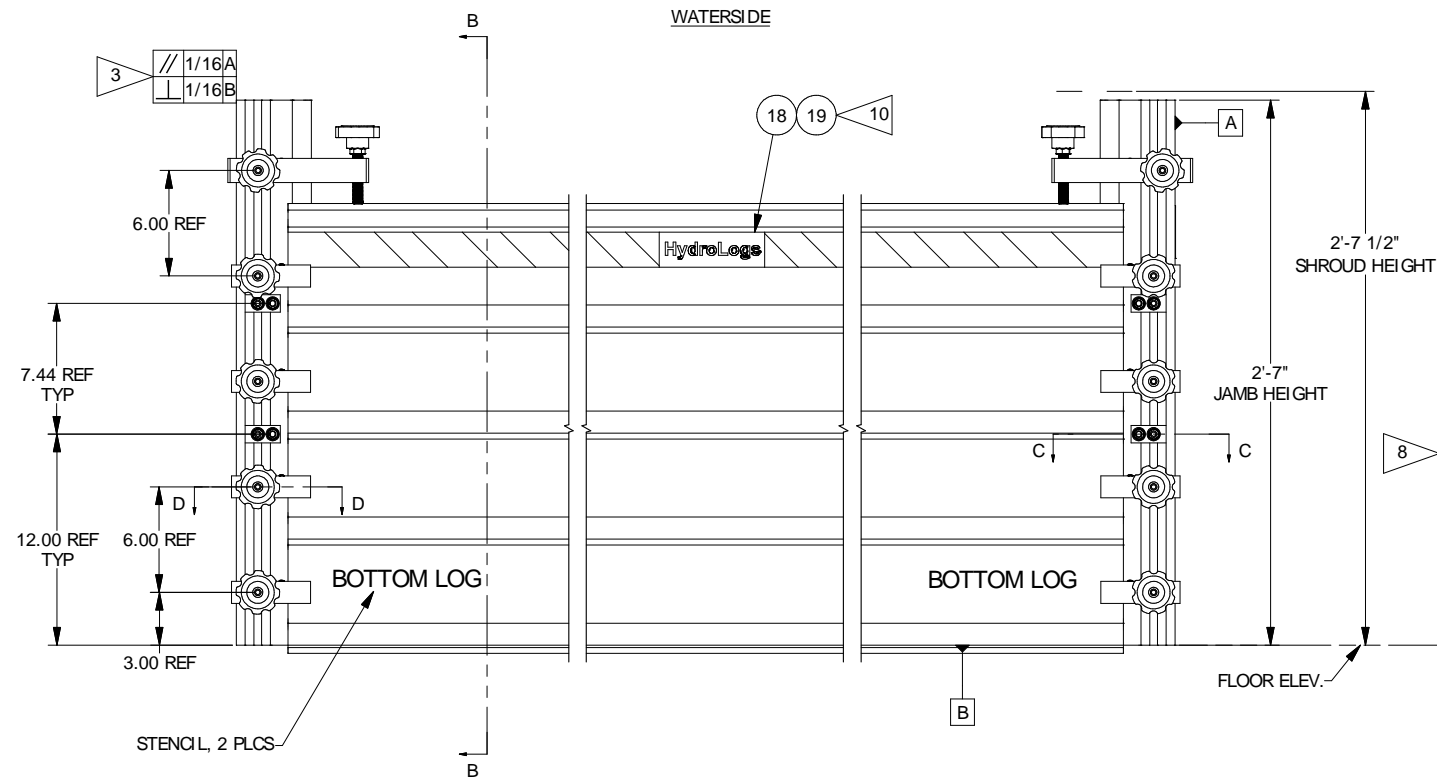
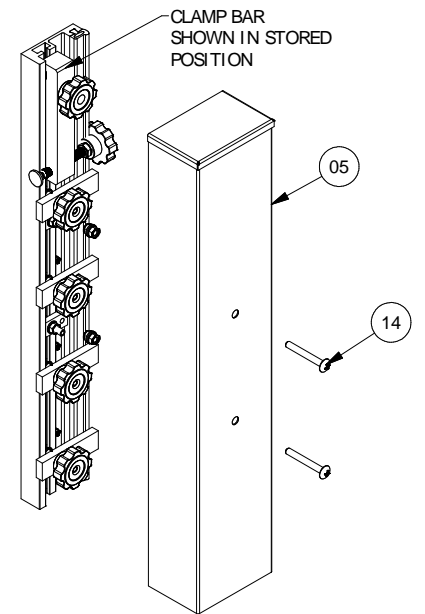
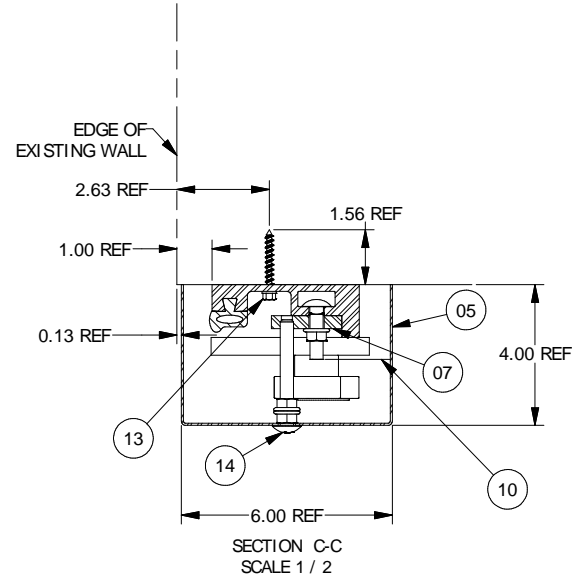
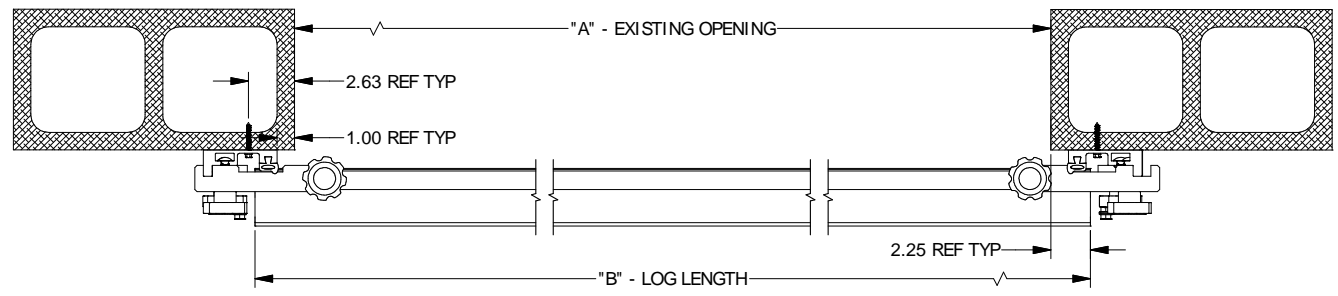
DATE	REV	SHT	DESCRIPTION	DR	CHK	APVD	QA
09/23/08	A		DETAIL 16 WAS KN8C. DETAIL 15 WAS KN6C. DETAIL 12 WAS 3816HFNSS. DETAIL 11 WAS 250206 DESTACO. DETAIL 10 WAS MCM 92356A628. MCM 92356A634.	WF	EH	EH	CO
1/5/10	B		ADD ITEMS 18 & 19 AND NOTE 10.	EH	WF	WF	CO
4/22/10	C		JAMB ANCHOR HOLE SPACING WAS 13.00, DETAIL 13 WAS HILTI 219913 SS MASONRY SCREW QTY 6, LOG OVERLAP WAS 2.00 REF TYP (ALL LOG LENGTHS INCREASED BY 1/2"), ADDED DETAIL 20 BOTTOM SEAL, DETAIL 01 QTY WAS 4, ADDED BOTTOM LOG STENCIL NOTE.	JF	AC	AC	BAH

NOTES:

1. IMPRESSION STAMP DATE, SERIAL NO., ASSEMBLY NO. & OPENING NO.
2. APPROXIMATE WEIGHT OF EACH STOP LOG IS: (SEE TABLE)
3. TOLERANCE MUST BE MAINTAINED AT INSTALLATION.
4. ALL TOLERANCES NON-ACCUMULATIVE.
5. SEAL SURFACE MUST BE SMOOTH, UNINTERRUPTED BY STEPS GREATER THAN .015 & FREE OF CRACKS FINISH LAY TO BE PARALLEL TO SEAL.
6. LOGS TO BE FLAT 1/8" OVER ENTIRE LENGTH.
7. FOR INSTALLATION & OPERATION INSTRUCTION SEE PRESRAY MANUAL IM-HL-11024.
8. STOP LOGS TO BE SOLVENT CLEANED AT ASSEMBLY. SHROUDS TO BE ABRASIVE CLEANED AT ASSEMBLY AS REQUIRED.
9. BARRIER DESIGNED FOR INCH 24" SEATING HEAD OF WATER.
10. ADD ITEMS 18 AND 19 CENTERED ON THE TOP LOG.



STANDARD SIZES			
PART NUMBER	"A"	"B"	LOG WEIGHT
HL-11024-01	8'-0"	100 1/2"	40 LBS
HL-11024-02	9'-0"	112 1/2"	45 LBS
HL-11024-03	10'-0"	124 1/2"	50 LBS
HL-11024-04	12'-0"	148 1/2"	60 LBS
HL-11024-05	14'-0"	172 1/2"	70 LBS



QTY	REV	SHT	STOCK SIZE/PART NO.	MATERIAL	DESCRIPTION
1	20		PPR34232 X "B"	NEOP SPONGE	SEAL EXTRUSION
1	19		RS-2	PLAS	REFLECTIVE TAPE
1	18		DD-HLBS	PLAS	HYDROLOGS STICKER
1	17		PRSS55	AL	DATA PLATE
2	16		KN8C---F6XB-21	PLAS	TURN KNOB
10	15		KN6C---F6XT-21	PLAS	TURN KNOB
4	14		3816TH3.00ZFS	ZPS	TRUSS HD SCREW
10	13		HILTI 219907	ZPS	MASONRY SCREW
20	12		7405	SS	HEX FLANG NUT
2	11		TC-250206	SS	SWIVEL ASSY
4	10		947	SS	CARRIAGE BOLT
10	09		949	SS	CARRIAGE BOLT
2	08		PR33904	AL	HOLD DOWN BRACKET
4	07		PR33906	AL	SHROUD BAR
8	06		PR33905	AL	COMPRESSION BRACKET
2	05		PR33907-04	AL	SHROUD COVER
2	04		PR33610 X 31	NEOP SPONGE	SEAL EXTRUSION
2	03		PR33608 X 31	AL	JAMB EXTRUSION
3	02		PR33610 X "B"	NEOP SPONGE	SEAL EXTRUSION
4	01		PR33608 X "B"	AL	6" LOG EXTRUSION

HYDROLOGS

DOORDAM LLC.
WASSAIC, NEW YORK

HYDROLOGS

SCALE: 1/2
DATE: 6/19/2008
DR: WF
CHK: EH
APVD: EH

DATE: 6/19/2008
DR: WF
CHK: EH
APVD: EH

DATE: 6/19/2008
DR: WF
CHK: EH
APVD: EH

SHEET 1 OF 1